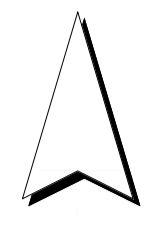
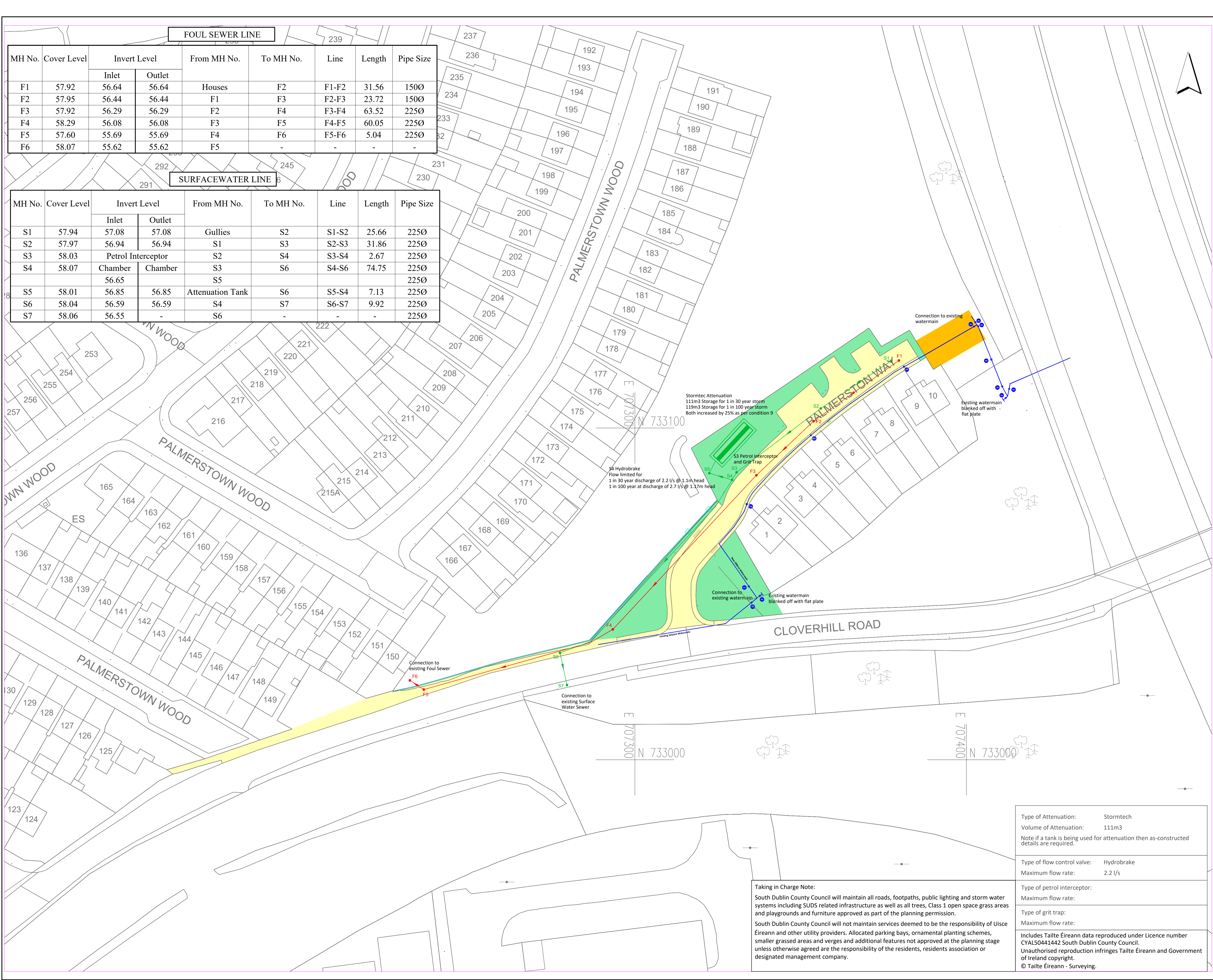


FOUL SEWER LINE

MH No.	Cover Level	Invert Level		From MH No.	To MH No.	Line	Length	Pipe Size
		Inlet	Outlet					
F1	57.92	56.64	56.64	Houses	F2	F1-F2	31.56	150Ø
F2	57.95	56.44	56.44	F1	F3	F2-F3	23.72	150Ø
F3	57.92	56.29	56.29	F2	F4	F3-F4	63.52	225Ø
F4	58.29	56.08	56.08	F3	F5	F4-F5	60.05	225Ø
F5	57.60	55.69	55.69	F4	F6	F5-F6	5.04	225Ø
F6	58.07	55.62	55.62	F5	-	-	-	-

SURFACEWATER LINE

MH No.	Cover Level	Invert Level		From MH No.	To MH No.	Line	Length	Pipe Size
		Inlet	Outlet					
S1	57.94	57.08	57.08	Gullies	S2	S1-S2	25.66	225Ø
S2	57.97	56.94	56.94	S1	S3	S2-S3	31.86	225Ø
S3	58.03	Petrol Interceptor		S2	S4	S3-S4	2.67	225Ø
S4	58.07	Chamber	Chamber	S3	S6	S4-S6	74.75	225Ø
		56.65		S5			225Ø	
S5	58.01	56.85	56.85	Attenuation Tank	S6	S5-S6	7.13	225Ø
S6	58.04	56.59	56.59	S4	S7	S6-S7	9.92	225Ø
S7	58.06	56.55	-	S6	-	-	-	225Ø

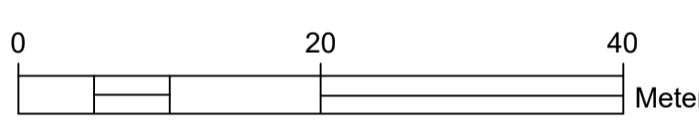


PLANNING AND TRANSPORT

Director:
Eoin Burke

Senior Engineer:
John Hegarty

- LEGEND:**
- Foul Sewer —●— Red
 - Surface Water Sewer —●— Green
 - Watermain —●— Blue
 - Fire Hydrant FH Sluice Valve SV
 - Air Valve AV Scour Valve SCV
 - Foul Water Under 225mm —●— Grey
 - Surface Water Under 225mm —●— Grey
 - Site Boundary — Red
 - Open Space
 - Roads and Footpaths to be TIC
 - Areas to Remain Private/Management Co.
 - Wayleaves



Revision	Description	Date

Notes:
 This drawing does not constitute a recommendation to have an estate taken in charge.
 This drawing refers to the taking in charge of the roads and services as indicated in colour.
 All sewers are 225mm dia. unless otherwise indicated.
 Scaled dimensions not to be used.
 Length of roads as on attached road schedule.
 Boundary treatments to roads taken in charge i.e. walls and/or railings are not included in, and are not part of the taking in charge procedure.

Location:
Palmerstown Way
Cloverhill Road
Clondalkin

Drawing Title:
Taking in Charge Scheme

Drawn by: P.L.	O.S. Reference: 3261-20
Surveyed by: BD Surveys	Scale: 1:500
Checked:	Date: 13/02/2026

Drawing Number:
BC-1459

Type of Attenuation:	Stormtech
Volume of Attenuation:	111m³
Note if a tank is being used for attenuation then as-constructed details are required.	
Type of flow control valve:	Hydrobrake
Maximum flow rate:	2.2 l/s
Type of petrol interceptor:	
Maximum flow rate:	
Type of grit trap:	
Maximum flow rate:	
Includes Tailte Éireann data reproduced under Licence number CYAL50441442 South Dublin County Council. Unauthorised reproduction infringes Tailte Éireann and Government of Ireland copyright. © Tailte Éireann - Surveying.	

Taking in Charge Note:
 South Dublin County Council will maintain all roads, footpaths, public lighting and storm water systems including SUDS related infrastructure as well as all trees, Class 1 open space grass areas and playgrounds and furniture approved as part of the planning permission.
 South Dublin County Council will not maintain services deemed to be the responsibility of Uisce Éireann and other utility providers. Allocated parking bays, ornamental planting schemes, smaller grassed areas and verges and additional features not approved at the planning stage unless otherwise agreed are the responsibility of the residents, residents association or designated management company.