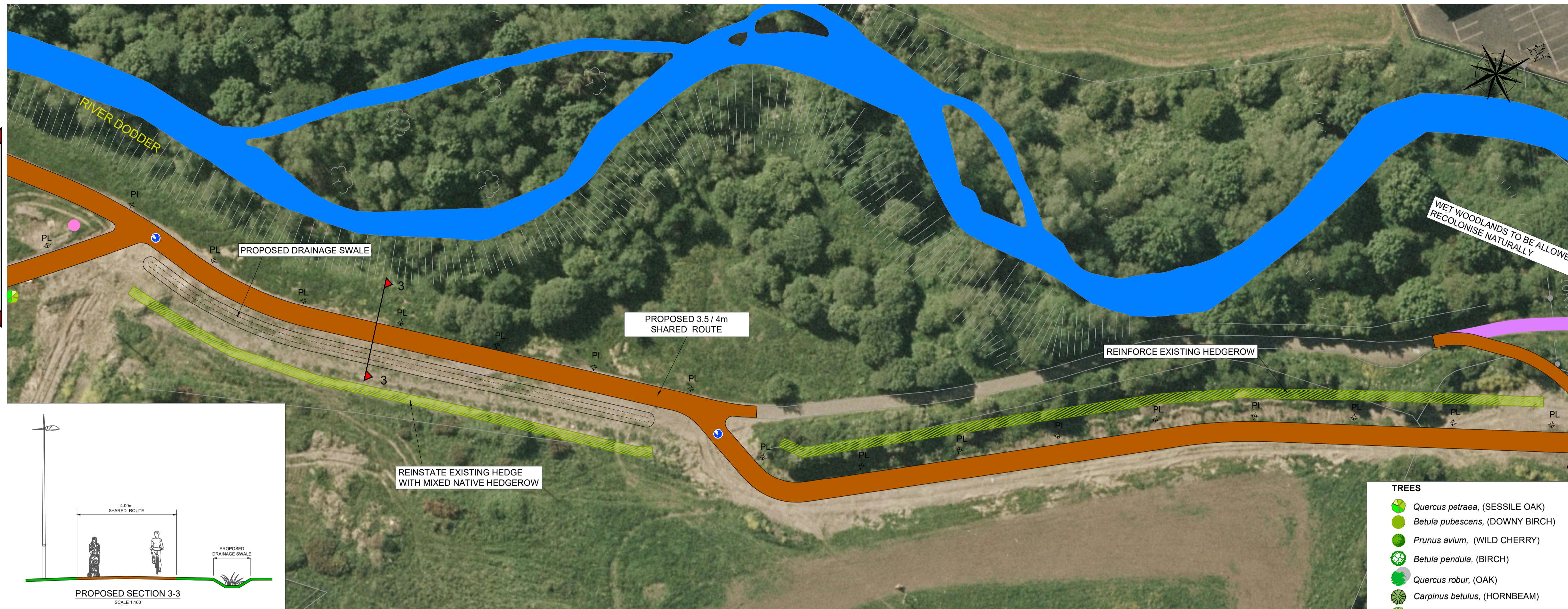
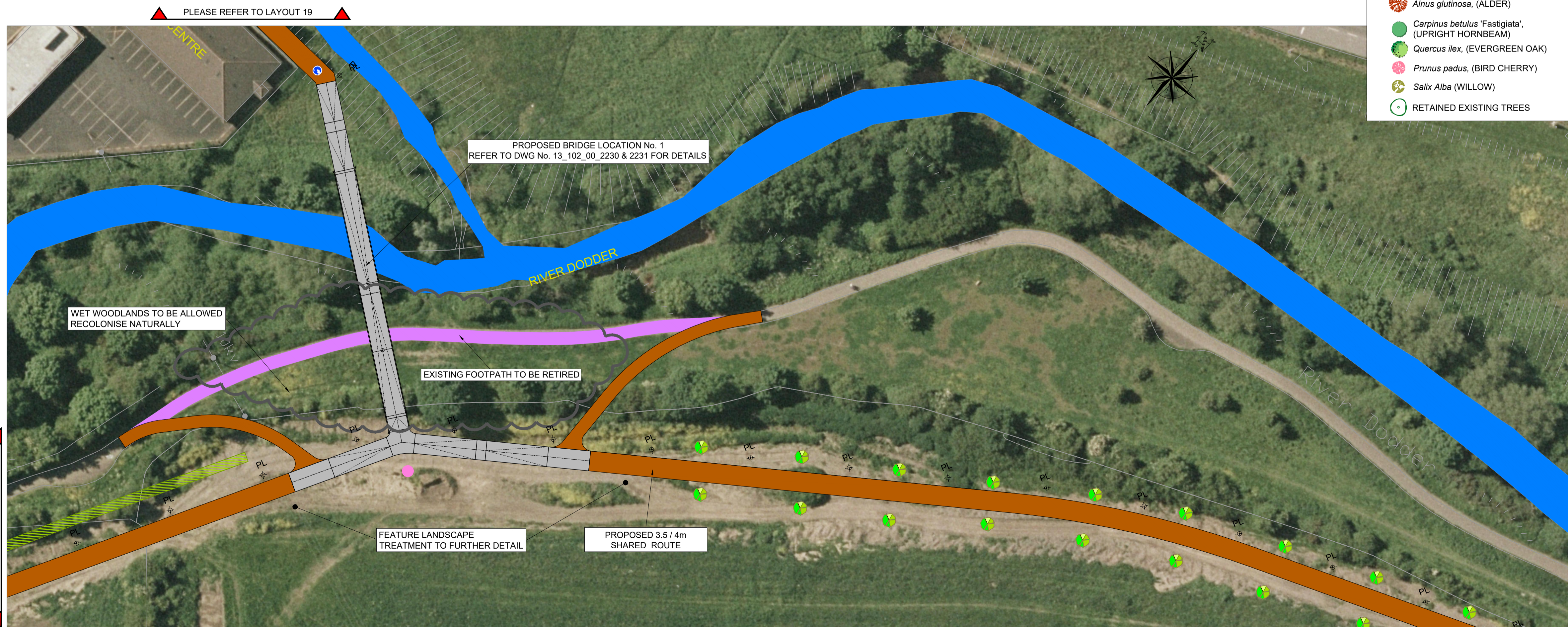


LEGEND:

- PROPOSED RED COLOURED SURFACING
 - PROPOSED RAISED OFF ROAD CYCLETRACK
 - RAISED CYCLE TRACK /OFF ROAD CYCLETRACK UPGRADE AS REQUIRED
 - PROPOSED FOOTPATH OR PROPOSED FOOTPATH IMPROVEMENT AS REQUIRED
 - PROPOSED CARRIAGEWAY REALIGNMENT
 - PROPOSED SHARED AREA
 - EXISTING ROAD ALIGNMENT
 - EXISTING SHARED AREA
 - PROPOSED WIDE SHARED STREET
 - EXISTING CYCLE FACILITY
 - EXISTING FOOTPATH
 - RIVERS, STREAMS, WATERBODIES
 - PROPOSED TACTILE PAVING
 - BANK TOP OR EDGE TREATMENT
 - PROPOSED CCTV LOCATION
 - PROPOSED PUBLIC LIGHTING LOCATION (SPACING TO BE IN LINE WITH ENVIRONMENTAL REPORT)
- SHRUBS**
- Viburnum opulus* 'COMPACTUM'
 - Hydrangea* 'LIMELIGHT'
 - Hamamelis mollis*
 - WOODLAND PLANTING, CONTAINING *Euonymus europaeus*, *Crataegus monogyna*, *Corylus avellana*, *Pinus sylvestris* etc
 - EXISTING LOW VALUE SCRUB VEGETATION SUCH AS GORSE, BRIAR AND IVY TO BE CLEARED, TREES TO BE SELECTIVELY RETAINED IN FAVOR OF NATIVE SPECIES
 - GROUNDCOVER PLANTING (PREFERENCE NATIVE SPECIES) USING *Viburnum opulus*, *Hedera hibernica* and *Rosa canina* etc.
 - ORNAMENTAL PLANTING USING *Rudbeckia 'Deamii'*, *Viburnum Davidii* and *Abelia chinensis* etc.
 - NATIVE RIVERSIDE PLANTING USING *Salix cinerea*, *Alnus incana*, *Corylus avellana* etc.
 - MIXED NATIVE HEDGEROW CONTAINING *Crataegus monogyna*, *Prunus spinosa*, *Viburnum opulus* etc.
 - LOW HEDGE *Lonicera pileata*
 - GRASS SEEDING OR SELF SEEDING GRASS IN NATURAL HERITAGE AREAS AND WHERE APPROPRIATE, ALLOW FOR 2m BAND OF GRASS SEEDING WITH SPECIES RICH GRASSLAND EITHER SIDE OF ANY NEW PAVING CONSTRUCTION IN GRASS AREAS WHERE REQUIRED
 - WET LAND GRASS
- TREES**
- Quercus petraea*, (SESSILE OAK)
 - Betula pubescens*, (DOWNY BIRCH)
 - Prunus avium*, (WILD CHERRY)
 - Betula pendula*, (BIRCH)
 - Quercus robur*, (OAK)
 - Carpinus betulus*, (HORNBEAM)
 - Sorbus aucuparia*, (MOUNTAIN ASH)
 - Sorbus aria*, (WHITEBEAM)
 - Alnus glutinosa*, (ALDER)
 - Carpinus betulus* 'Fastigiata', (UPRIGHT HORNBEAM)
 - Quercus ilex*, (EVERGREEN OAK)
 - Prunus padus*, (BIRD CHERRY)
 - Salix Alba*, (WILLOW)
 - RETAINED EXISTING TREES
- BULBS
- RESIN BOUND PAVING



LAYOUT - 17
SCALE: 1:500



LAYOUT - 18
SCALE: 1:500

C	Landscaping Layout and Legend Amendments	KT	27/04/17
B	Landscaping Layout and Text Amendments	KT	06/04/17
A	Text Amendments	PW	28/09/16
Revision	Description	Initials	Date

AUSTEN ASSOCIATES

Clifton Scannell Emerson Associates Limited
Consulting Engineers,
Seafort Lodge,
Castledawson Avenue,
Blackrock, Co. Dublin,
Ireland.
T: +353 1 288 5006
F: +353 1 283 3466
E: info@csea.ie
W: www.csea.ie

Client	South Dublin County Council
Project	Dodder Greenway Proposed Scheme Layout
Dwg. Title	Sheet 9 of 22
Drawn By	JG
Date	23-07-13
Checked by	RG
Scale	1:500 @ A1
Dwg. Progress	PART 8
Dwg. No.	13_102_00_2209-C