

# Archaeology and Cultural Heritage

Desk-based Report

# Archaeology and Cultural Heritage

## Desk-based Report

### Introduction

This Archaeology and Cultural Heritage desk-based report has been prepared by AECOM on behalf of South Dublin County Council (the Client) to support the Clonburris Phase One planning application (the 'Proposed Development'). The Phase One planning application relates to a development area owned by South Dublin County Council (SDCC) located within the Clonburris Strategic Development Zone.

The Proposed Development concerns an area measuring 500m west to east by 300m at its widest point. It is currently comprised of open grassed areas with a traveller halting site located within the eastern extent.

### Scope

This desk-based report addresses archaeology and cultural heritage. This comprises archaeological assets, architectural heritage and designed landscapes such as gardens and demesnes. This baseline also considers the setting of these heritage assets, which can be described as the surroundings in which the heritage assets are experienced and appreciated.

The main objectives of the desk-based report are:

- to identify cultural heritage assets within the Proposed Development and surrounding study area which extends 1km from its boundary;
- to assess the baseline information and offer an analysis of the potential for currently unrecorded archaeological assets within the Proposed Development;
- to assess the importance of the cultural heritage assets;
- to assess the potential impact of the Proposed Development on cultural heritage assets within its footprint;
- to assess the potential impact of the Proposed Development on the settings of cultural heritage assets within the settings

assessment study area which extends 1km from the scheme boundary; and

- to recommend measures to mitigate impact to cultural heritage assets that are likely to arise as a result of the Proposed Development.

### Methodology

### Sources

The preparation of the baseline was informed by material gathered and collated from various sources, including:

- National Monuments Service (NMS) and Archaeological Survey of Ireland (ASI);
- National Inventory of Architectural Heritage (NIAH);
- South Dublin County Development Plan 2016-2022, Record of Protected Structures;
- Clonburris Strategic Development Zone (SDZ) Draft Planning Scheme Archaeological and Architectural Heritage Inventory September 2017; and
- Geological Survey of Ireland.

Online sources were also consulted, including Ordnance Survey Ireland historic mapping, toponym (place name) information and Heritage Council of Ireland mapping.

### Asset Selection and Study Area

A study area, which extends 1km from the Proposed Development boundary, has been selected for the identification of known and potential cultural heritage assets (archaeological, architectural heritage and designed landscapes). This study area is illustrated on Figure 2.

An assessment of setting was also undertaken for designated heritage assets (Protected Structures, National Monuments, Recorded Monuments and sites on the Register of Historic Monuments, and Architectural Conservation Areas) within the study area.

# Archaeology and Cultural Heritage

## Desk-based Report

### Assessment of Importance of Heritage Assets

A cultural heritage asset is defined as a monument, building, group of buildings and sites which are the combined works of nature and man constituting the historic or built environment (World Heritage Convention 1972). A heritage asset's value is not solely expressed through any designated status but can also be exhibited through a series of values or special interests. These include architectural, historical, artistic, archaeological, cultural, scientific, social or technical interests. There is the potential for non-designated assets to display special interests equivalent to a designated asset. Therefore a "designated" status does not necessarily confer a set level of importance on an asset, rather professional judgement and an assessment of the special interest displayed by that asset are examined and a level of importance is assigned.

Section 2 of the 1930 National Monuments Act defines a 'national monument' as "a monument or the remains of a monument the preservation of which is a matter of national importance by reason of the historical, architectural, traditional, artistic, or archaeological interest attaching thereto." National Monuments are considered nationally important and any works carried out at, or in close proximity to, an archaeological site designated as a National Monument in the ownership or guardianship of the Minister or a Local Authority may require a Ministerial Consent.

National Monuments and Record of Monuments and Places (RMP) sites/ Register of Historic Monuments (RHM) sites are not clearly differentiated in the National Monuments Act 1930 – 2004. However, not all RMP and RHM sites and associated constraint areas demonstrate the same level or degree of heritage special interest as can be found in National Monuments. Therefore, they can be considered to be of either of national or regional importance and an assessment of the special interest of the asset and professional judgement is used to identify the appropriate level of importance.

Some archaeological and architectural heritage assets are also included on the Record of Protected Structures (RPS) of each county or city development plan, under Section 51(1) of the Planning and Development Act, 2000 (Revised). These protected structures are included in the RPS due to their special architectural, archaeological, artistic, cultural, historical, scientific, social or technical interest. Protected structures are considered to be of international, national or regional importance.

Architectural Conservation Areas are areas which are designated in a county development plan, under Section 81(1) of the Planning and Development Act, 2000 (Revised), in order to "preserve the character of a place, area, group of structures or townscape" that are of special architectural, historical, archaeological, artistic, cultural, scientific, social or technical interest or value; or "contributes to the appreciation of protected structures." Architectural Conservation Areas are considered to be of either national or regional importance.

The National Inventory of Architectural Heritage was established to assist councils in assessing whether structures should be added to their Record of Protected Structures. These architectural heritage assets are rated to be of either international, national, regional, local or 'record only' importance.

The National Inventory of Architectural Heritage also contains a Garden Survey which includes designed landscapes such as parks, gardens and demesnes. These can be divided into those with substantially intact landscapes and features; and those where the landscape has been significantly eroded by later changes with only peripheral features intact. For the purposes of this assessment, the substantially intact landscapes are judged to be of international, national or regional importance while the denuded landscapes are judged to be of local importance.

Townlands are the lowest level, officially defined geographical area in Ireland and date to before the Anglo-Norman period (12th century). The boundaries of townlands are often visible in the landscape as walls, tree-lined ditches and embankments or natural features such as streams. They provide visible physical evidence of historical territory or political boundaries

# Archaeology and Cultural Heritage

## Desk-based Report

and are regarded as being of local importance as historic, cultural heritage features.

### Assessment Methodology

The assessment of baseline conditions was carried out in accordance with the following guidance:

- Environmental Protection Agency (EPA), 2017, Guidelines on the Information to be Contained in Environmental Impact Assessment Reports;
- EPA, 2003, Advice Notes on Current Practice in the Preparation of Environmental Impact Statements;
- Department of Arts, Heritage, Regional, Rural and Gaeltacht Affairs & Transport Infrastructure Ireland 2017 Code of Practice for Archaeology agreed between the Minister for Arts, Heritage, Regional, Rural and Gaeltacht Affairs and Transport Infrastructure Ireland. Dublin.
- Department of Arts, Heritage and the Gaeltacht, 2004, Frameworks and Principles for the Protection of the Archaeological Heritage;
- Department of Arts, Heritage and the Gaeltacht, 2004, Architectural Heritage Guidelines;
- Department of Arts, Heritage and the Gaeltacht, 2017, NIAH Handbook;
- National Roads Authority (NRA), 2006, Guidelines for the Assessment of Archaeological Heritage Impacts of National Road Schemes; and
- National Roads Authority (NRA), 2006, Guidelines for the Assessment of Architectural Heritage Impacts of National Road Schemes.

### Setting Assessment Methodology

This assessment has been guided by Historic England's Historic Environment Good Practice Advice in Planning: Note 3 (Second Edition) – The Setting of Heritage Assets (HE 2017). The Setting of Heritage Assets provides guidance on setting and development management, including assessing the implications of development proposals, a counterpart to which has not yet been produced in Ireland.

A staged approach is recommended for setting assessments, the first step of which is to identify the cultural heritage assets affected and their settings. The second step is to assess whether, how and to what degree these settings make a positive contribution to the importance of the heritage asset(s), i.e. "what matters and why". This includes a description of the key attributes of the cultural heritage asset itself, then considers the physical surroundings of the asset, including its relationship with other heritage assets; the way the cultural heritage asset is appreciated; and the asset's associations and patterns of use. The third step (where appropriate) is to assess the effect of the proposed development on the significance of assets through the consideration of the key attributes of the proposed development in terms of its location and siting; form and appearance; additional effects; and permanence.

The assessment methodology has also been guided by the Department of the Environment, Heritage and Local Government's Architectural Heritage Protection, Guidelines for Planning Authorities which was published in 2004 and revised in 2011. This contains the relevant guidance which is detailed below. It is important to note that paragraph 13.8.1 of the guidance states that proposed development outside the curtilage or grounds of a protected structure or ACA should be given similar consideration as for proposed development within the attendant grounds. This methodology has been combined with the Historic England methodology, in order to conduct a similar and more robust assessment of the impacts of the proposed development on recorded archaeological monuments, in addition to architectural heritage.

# Archaeology and Cultural Heritage

## Desk-based Report

### *Development Within the Attendant Grounds*

“13.7.1 It is essential to understand the character of a site before development proposals can be considered. Where attendant grounds of particular significance are proposed for development, a conservation plan could be prepared in advance of any planning application which would identify the significance of the site and locate areas within the designed landscape, if any, which could accept change and development and those areas which could not without damaging the architectural heritage of the place.

13.7.2 When dealing with applications for works within the attendant grounds of a protected structure, a visit to the site should be considered an essential part of the assessment. The planning authority should consider:

- a) Would the development affect the character of the protected structure?
- b) Would the proposed works affect the relationship of the protected structure to its surroundings and attendant grounds?
- c) Would the protected structure remain the focus of its setting? For example, a new building erected between a structure and a feature within the attendant grounds will alter the character of both;
- d) Do the proposed works require an alteration of the profile of the landscape, for example, the creation of a golf course? How would this affect the character of the protected structure and its attendant grounds?

e) Do the proposals respect important woodland and parkland? Do they conserve significant built features and landscape features?

f) Are there important views of or from the structure that could be damaged by the proposed development? Would important vistas be obstructed by new development?

g) Would distant views of important architectural or natural landmarks be blocked or changed? Would a significant skyline be altered?

h) Even where the proposed development is at a distance from the protected structure, could it still have an impact? This could include tall or bulky buildings interrupting views of or from the protected structure and other features of the designed landscape;

i) Where the new works would not be directly visible from the protected structure, would they be visible from the approaches to the structure or from other important sites or features within the attendant grounds? If so, would this be acceptable?

j) What effect would the scale, height, massing, alignment or materials of a proposed construction have on the protected structure and its attendant grounds?”

### *Other Development Affecting the Setting of a Protected Structure or an Architectural Conservation Area (ACA)*

“13.8.1 When dealing with applications for works outside the curtilage and attendant grounds of a protected structure or outside an ACA which have the potential to impact upon their character, similar consideration should be given as for proposed development within the attendant grounds. A visit to

# Archaeology and Cultural Heritage

## Desk-based Report

the site should be considered an essential part of the assessment.

13.8.2 New development both adjacent to, and at a distance from, a protected structure can affect its character and special interest and impact on it in a variety of ways. The proposed development may directly abut the protected structure, as with buildings in a terrace. Alternatively it may take the form of a new structure within the attendant grounds of the protected structure. A new development could also have an impact even when it is detached from the protected structure outside the curtilage and attendant grounds but is visible in an important view of or from the protected structure.

13.8.3 The extent of the potential impact of proposals will depend on the location of the new works, the character and quality of the protected structure, its designed landscape and its setting, and the character and quality of the ACA. Large buildings, sometimes at a considerable distance, can alter views to or from the protected structure or ACA and thus affect their character. Proposals should not have an adverse effect on the special interest of the protected structure or the character of an ACA.”

In addition to the documents listed above, the setting assessment methodology has also utilised the guidance contained within the following document:

- Cork County Council, 2006, Guidance Notes for the Appraisal of Historic Gardens, Demesnes, Estates and their Settings. This document was prepared by Cork County Council in response to increasing adaptation and redevelopment of planned landscapes within the county. While written for County Cork, the guidance presented is applicable to sites throughout Ireland.

The guidance notes advise the following stepped approach:

- Identification and description of development, history, features and boundaries of the designed landscape using scoping, archival research and fieldwork;
- Evaluation & assessment of significance including Historical Landscape description, archaeological and horticultural aspects;
- Assessing development proposals through an assessment of the heritage impact; and
- Recommendations for mitigation & management including future research.

## Legislation, Planning Policy and Guidance

This desk-based report has been informed by legislation relating to cultural heritage including:

- National Monuments Acts (1930 – 2004);
- The Heritage Act 2018;
- National Heritage Plan (2002);
- Planning and Development Acts 2000 – 2016; and
- Planning and Development Regulations 2001 and 2002 Planning Policy.

Local planning policy within the study area is contained within the South Dublin County Development Plan 2016 - 2022. This outlines South Dublin County Council's policies in regard to Archaeological and Built Heritage. Heritage, Conservation and Landscapes (HCL) Policy 2 Archaeological Heritage notes the following objectives which are relevant to the Masterplan:

- HCL2 Objective 1: To favour the preservation in-situ of all sites, monuments and features of significant historical or archaeological interest in accordance with

# Archaeology and Cultural Heritage

## Desk-based Report

the recommendations of the Framework and Principles for the Protection of Archaeological Heritage, DAHGI (1999), or any superseding national policy document.

- HCL2 Objective 2: To ensure that development is designed to avoid impacting on archaeological heritage that is of significant interest including previously unknown sites, features and objects.
- HCL2 Objective 3: To protect and enhance sites listed in the Record of Monuments and Places and ensure that development in the vicinity of a Recorded Monument or Area of Archaeological Potential does not detract from the setting of the site, monument, feature or object and is sited and designed appropriately.
- HCL Objective 4: To protect and preserve the archaeological value of underwater archaeological sites including associated features and any discovered battlefield sites of significant archaeological potential within the County.

The Development Plan 2016 – 2022 also outlines the council’s policies to Built Heritage including Protected Structures, older buildings (such as those noted on the National Inventory of Architectural Heritage) and Industrial Heritage. Heritage, Conservation and Landscapes (HCL) Policy 3 Protected Structures notes the following objectives which are relevant to the Masterplan:

- HCL3 Objective 1: To ensure the protection of all structures (or parts of structures) and the immediate surroundings including the curtilage and attendant grounds of structures contained in the Record of Protected Structures.
- HCL3 Objective 2: To ensure that all development proposals that affect a Protected Structure and its setting including proposals to extend, alter or refurbish any Protected Structure are sympathetic to its special character and integrity and are appropriate in terms of architectural treatment, character, scale and form. All

such proposals shall be consistent with the Architectural Heritage Guidelines for Planning Authorities, DAHG (2011) including the principles of conservation.

- HCL3 Objective 3: To address dereliction and encourage the rehabilitation, renovation, appropriate use and re-use of Protected Structures.
- HCL3 Objective 4: To prevent demolition and inappropriate alteration of Protected Structures.

Heritage, Conservation and Landscapes (HCL) Policy 5 Older Buildings, Estates and Streetscapes notes the following objectives which are relevant to structures noted on the National Inventory of Architectural Heritage within the study area:

- HCL5 Objective 1: To retain existing houses that, while not listed as Protected Structures, are considered to contribute to historic character, local character, visual setting, rural amenity or streetscape value within the County.
- HCL5 Objective 2: To ensure that the redevelopment of older buildings, including extensions and renovation works do not compromise or erode the architectural interest, character or visual setting of such buildings including surrounding housing estates or streetscapes.
- HCL5 Objective 3: To encourage the retention, rehabilitation, renovation and re-use of older buildings and their original features where such buildings and features contribute to the visual setting, collective interest or character of the surrounding area.
- HCL5 Objective 4: To ensure that infill development is sympathetic to the architectural interest, character and visual amenity of the area.

The Grand Canal is an industrial heritage feature which runs across South County Dublin including to the south of the Proposed Development. The protection of the Canal landscape and its environment is a priority of the Development Plan and Heritage, Conservation and

# Archaeology and Cultural Heritage

## Desk-based Report

Landscapes (HCL) Policy 11 Grand Canal has been formulated with objectives designed to protect the canal. Objectives of note include:

- HCL11 Objective 4: To ensure that development along or adjacent to the Grand Canal protects, incorporates and enhances built and industrial heritage features, particularly historic canal and mill buildings, and also sets out to protect the setting of such built heritage features.
- HCL11 Objective 6: To enhance the industrial heritage and the recreational and amenity potential of the 12th Lock and pursue the protection and conservation of the rich natural, built and cultural heritage of the area including natural habitats and ecological resources along the Grand Canal and Griffeen River.

character, interest of the area should be identified, retained and refurbished.

Additionally, Section 2.12 of the SDZ Planning Scheme sets out a Key Principle to 'incorporate Architectural Heritage Structures and features throughout the SDZ lands in a manner that promotes place making and capitalises on the unique industrial heritage of the surrounding area'. Subsection 2.12.2 advises that, in addition to Protected Structures, additional structures of architectural merit have been identified on the SDZ lands including industrial heritage (aqueduct, viaduct, millrace and overflow) and a vernacular building-Grange House.

It is stated that development within the SDZ lands should be designed and carried out in a manner that protects and conserves Protected Structures and, where possible, retains and conserves Additional Heritage Structures. Rehabilitation, renovation, incorporation and appropriate use and re-use is promoted. Key requirements in relation to some structures are set out in Chapter 3 of the Planning Scheme.

It is also a requirement for development proposals for works to a structure of significant merit should be accompanied by a Method Statement and, in the case of works that will have a significant impact, an Architectural Heritage Impact Assessment will also be required. It is also stated that, where possible and appropriate, any further features that contribute to the

# Archaeology and Cultural Heritage

## Desk-based Report

### Baseline

### Location of the Proposed

### Development and Description

The Proposed Development is owned by the Client and is located within the Clonburris SDZ. It largely comprises greenfield with a traveller halting site occupying the east extent. The Proposed Development is bounded to the north by the railway line, to the south by a laneway and to the west by a heavily vegetated area and a yard owned by South Dublin County Council.

### Geology

The landscape in which the Proposed Development is set is formed of Viséan basinal limestone or 'Calp' laid down during the Carboniferous period of the Palaeozoic. The overlying soil is clay enriched luvisol and part of the Elton subseries defined by fine loamy drift with limestones (SEA 2017).

### Site Visit / Field Survey and Topography

The Site was visited on the 14th April 2021. As noted in the description of the Proposed Development, the Site comprises a traveller halting site to the east, a heavily vegetated area in the centre and a yard owned by the South Dublin County Council at the west. The area of the traveller halting site and eastern extent of the Site was not accessible during the period of this assessment.

The area is located to the immediate west of the R136 and is accessed via Lynches Lane which leads southwest from a roundabout on the R136 and forms the south extent of the Site (**Photograph 1**).



**Photograph 1** Lynches Lane forming the southern extent of the Site.

The R136 is constructed on an embankment sitting well above the ground level within the Site. The terrain within the Site consists of level ground with the area around the traveller halting site comprising open greenfield which is crossed by multiple overhead powerlines. The remains of a one and half storey house are located within the southwest corner of the open greenfield (**Photograph 2**). The house is derelict, roofless and engulfed in vegetation. It appears to be a modern construction with a central chimney breast, a pitched roof and a window at the upper level on the east facing gable end.

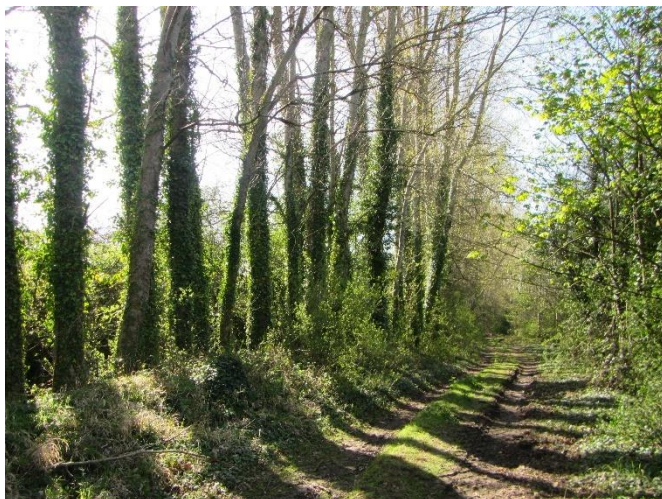
# Archaeology and Cultural Heritage

## Desk-based Report



**Photograph 2** Derelict building within the open greenfield.

The heavily vegetated area is located to the immediate west of the open greenfield. The east boundary of this area is tree-lined with a stream running immediately adjacent (**Photograph 3**). This stream is also the boundary between the townlands of Kishoge and Grange.



**Photograph 3** The tree-lined townland boundary.

The area is bounded to the north by the railway line (**Photograph 4**). The boundary with the railway is formed by a metal fence.



**Photograph 4** The railway line bounding the Site to the north.

The area is accessible via tracks which cross from the council yard to the west. These tracks are rutted suggesting recent use. The terrain within the area is level but uneven suggesting it is possibly disturbed. It is generally untended with the result that the majority is overgrown. While mounds of building debris and soil are present across the entire area (**Photograph 5**). Overhead electricity power lines also cross the area from southwest to northeast (**Photograph 6**).



**Photograph 5** Mounds of soil and building debris within the Site.

# Archaeology and Cultural Heritage

## Desk-based Report



**Photograph 6** Overhead electricity lines crossing the Site and rutted track.

The northwest of the heavily vegetated area contains a high earth bank which is orientated north to south (**Photograph 7**). This bank sub-divides this section with the northwest extent not accessible.



**Photograph 7** High earth bank within the northwest of the heavily overgrown area.

The southwest corner of the heavily vegetated area bounds the council yard which is located to the southwest. The southwest corner is more open, although the ground appears to be completely covered in spoil and building debris (**Photograph 8**).



**Photograph 8** The southwest corner of the heavily vegetated area.

The third area is the council yard which forms the southwest extent of the Site. The council yard consists of a sub-triangular area, although the Proposed Development only incorporates the eastern extent. This includes the concreted yard and a modern corrugated sheet shed (**Photograph 9**).



**Photograph 9** The yard and corrugated sheet shed.

The Site also incorporates the entrance to the council yard from Lynche's Lane. A north flowing canalised stream is located to the immediate west of the entrance gate and the access road passes over the stream. The area around the stream to the south of the access road

# Archaeology and Cultural Heritage

## Desk-based Report

contains a modern footbridge (**Photograph 10**). The footbridge appears to be a recent addition with the ground on either side visibly disturbed.



**Photograph 10** Modern footbridge over the canalised stream.

## National Monuments

There are currently no sites or monuments under Preservation Order and no National Monuments in state care or ownership and guardianship of the Minister for the Arts, Heritage, Regional, Rural and Gaeltacht Affairs, within the Proposed Development or the study area.

## Record of Monuments and Places (RMPs)

There are no recorded monuments located within the boundaries of the Proposed Development with two located within the 1km study area. A further five recorded monuments are located just beyond the study area.

The **Grange Castle (DU017-034)** is located approximately 600m southwest of the Proposed Development. It was shown as a castle on the Down Survey map (1655-6) and now consists of a three storeys high rectangular tower house attached to a farmhouse in flat, low-lying ground. The walls are generally plastered but areas of exposed stonework

show coursed limestone with roughly dressed quoins. The entrance consists of a round headed doorway in the north facing wall and a murder hole is located over the entrance lobby which leads into a vaulted ground floor measuring 7.08m long by 5.2m wide.

A round-headed doorway in the lobby provides access to the stair turret. The first floor is not accessible and the second floor is accessed through a two-centred arched doorway. A garderobe chute is located in the southeast corner. It is supported by corbels and entered through a narrow round-headed door to a small circular chamber which is lit by a single ope. The jambs are hammer dressed and there is a square stair tower which rises above parapet level. A drawing from 1773 shows stepped crenellations at parapet level. Grange Castle is recorded as No.132 on the South Dublin County Development Plan 2016-2022 Record of Protected Structures.

Archaeological monitoring and excavation took place in 1997 within the vicinity of the castle in advance of construction of a foul sewer and access roads for a business park. These identified a curving ditch 30m in length, 0.8-0.9m deep, and 1.2-2.4m wide orientated north-east/south-west (O'Brien, 1998). The upper fills of the ditch contained charcoal, mortar, flint and animal bones. No ceramics were recovered from the fills though a decorated bone comb, stick-pin and knife date the later ditch phase to the 13th century. The ditch was crossed by a stone causeway measuring 0.5m-0.6m wide and between 0.06m-1.0m deep. Archaeological investigations revealed extensive early medieval and post-medieval activity in the area while the ditches are interpreted as medieval field boundaries.

Further archaeological investigations were carried out as part of a programme of conservation at the castle in 2016 (Duffy, 2016). Eight pits were excavated under archaeological supervision with nothing of significance identified.

A **ring barrow (DU017-080)** is located 870m to the south-southeast of the Proposed Development within the Grange Business Park. It was uncovered during geophysical survey and test trenching conducted in 2000 in advance of the development of the Business Park (Doyle 2002). The ring barrow was formed by a ditch which enclosed an area 13m in diameter. Fragments of human skull were found in the upper fill of

# Archaeology and Cultural Heritage

## Desk-based Report

the ditch while a cist-like structure was uncovered in the northern quadrant of the ditch. Early Bronze Age pottery was recovered as was a bead while soil samples taken from the ditch contained remains of barley, wheat, oats and evidence for hazel, haw and sloe.

A **fulacht fiadh (DU017-084)** was also uncovered during archaeological monitoring associated with the construction of the Grange Business Park (Doyle, 2001). It consisted of a small pit or trough with an associated spread of heat cracked stone and a linear feature located 1.1km to the south-southeast of the Proposed Development. The pit/trough was sub-circular and cut into the subsoil while the linear feature had sharply sloping sides and a flat base. This feature was interpreted as a gully. Fragments of burnt bone were recovered from the fill of the gully.

A cluster of three recorded monuments is located approximately 1.05km southeast of the Proposed Development. These consist of a **church (DU017-038001)**, **graveyard (DU017-038002)** and **moated site (DU017-038003)**. The graveyard (DU017-038002) is located in a flat, low-lying area. It is rectangular with some 19th century memorials and very few gravestones visible. The remains of the medieval parish church (DU017-038001) are located in the northeast corner of this, now, disused graveyard. It served the smallest parish in the county and was dedicated to St. Cuthbert of Lindisfarne. It was held by St. Mary's Abbey in Dublin from 1186 until 1540 when it was reunited with Clondarkin (Ball, 1940).

The remains of the church are constructed of undressed random rubble masonry comprising a nave and chancel divided by a two-centred arch. The entrance is located within the west gable and consists of a round arched doorway. The door is rebated with draw bar holes and a rectangular window is located above the doorway. The nave measures 6.6m long by 5.1m wide with walls 0.9m wide. It is lit by narrow slit openings on the west and south sides while other features include a square opening in the north wall and a wall press in the south wall.

The chancel measures 5.85m long by 5.05m wide narrowing to 4.42m. It is lit by plain pointed lights and a double bellcote rises above the chancel arch. The east window consists of a pointed light in a deep widely

splayed embrasure which has a stepped feature. Other features include recesses under the sill of the east window and on the south wall of the chancel, while a low aumbrey or recessed cabinet is located at the south end of the east wall.

The moated site (DU017-038003) is located on flat low-lying land attached to the south side of the graveyard. It consists of a rectangular enclosure measuring 95m long by 50m wide internally. It is defined by a flat-topped earthen bank measuring 4.1m wide by 0.5m high. The bank is enclosed by a ditch measuring 3.5m wide by 2.1m deep. The site is accessed by a causeway across the ditch on the northeast side. The church, graveyard and moated site are recorded as No. 133 on the South Dublin County Development Plan 2016-2022 Record of Protected Structures.

An **enclosure (DU017-035)** is located in a field of rough pasture 1.05km to the east of the Proposed Development. The asset is visible on an aerial photograph (FSI 1971/224-6) taken in 1971 as a horseshoe-shaped enclosure. There are no visible features at ground level.

## Architectural Conservation Areas

Neither the Proposed Development nor the associated study area are located within an Architectural Conservation Area.

## Record of Protected Structures

The South Dublin County Development Plan 2016-2022 Record of Protected Structures notes three Protected Structures within the study area. Details of these can be found in Appendix 2. All the Protected Structures are considered regionally important architectural buildings or structures. None are located within the Proposed Development.

Two of the **Recorded Structures (Nos. 132 and 133)** are also archaeological sites, **Grange Castle (DU017-034)** and a **church (DU017-038001)**, **graveyard (DU017-038002)** and **moated site (DU017-038003)** respectively. These have already been discussed.

The remaining Protected Structure, **Grange Cottage (No. 120)** is also noted on the National Inventory of

# Archaeology and Cultural Heritage

## Desk-based Report

Architectural Heritage (NIAH) as NIAH 11204057. Grange Cottage (No. 120) is located 811m to the southwest of the Proposed Development. Grange Cottage is a detached six-bay, single-storey farm house which dates to 1810. It has roughcast rendered walls with a smooth rendered base course, a pitched slate roof with four brick chimney stacks. The farm house has been modernised with an enclosed glazed porch, a corrugated iron shed and a small flat-roofed extension to the rear.

## National Inventory of Architectural Heritage

There are six structures / buildings noted on the NIAH Building Survey within the study area. None of these are located within the Proposed Development and full details can be found in Appendix 2. One is the archaeological site **Grange Castle (NIAH 11208013)** while another is the Protected Structure – **Grange Cottage (NIAH 11204057)**, described above.

Grange Cottage is part of a **complex of farm buildings set around a courtyard (NIAH 11204058)**. The farm buildings to the north of the courtyard are not part of the Protected Structure. They comprise detached, multiple bay, single storey farm buildings dating to 1820 and now in a dilapidated condition.

Another asset recorded on the NIAH Building Survey is a bridge carrying a local road over the railway line. This **railway bridge (NIAH 11204059)** is located 634m to the northwest of the Proposed Development. It is a single arch bridge dating to 1915. Also, on the railway line is **railway bridge (NIAH 11204051)** which is located 990m to the northwest of the Proposed Development. It is also a single arch bridge dating to 1915.

The last asset recorded on the NIAH Building Survey within the study area is **Coolamber House (NIAH 11204049)**. This is a detached, six-bay, two-storey house which was built in 1945. It is located 900m to the northwest of the Proposed Development.

## Additional Heritage Structure

Additional Heritage Structures have been identified within the Clonburris Strategic Development Zone (SDZ) Draft Planning Scheme Archaeological and Architectural Heritage Inventory (2017). One of these is located within the study area (Figure 2, p22). This is **Grange House** which is located towards the west end of Lynche's Lane, 50m to the southwest of the Proposed Development (**Photograph 11**). The house is marked on the 1st Edition OS map (1843) and the original detached farmhouse survives as a two-storey dwelling with a rear return and a single storey extension on its east side which was added during the second part of the 19th century. The original 19th century front garden is largely intact. The house is not recorded on the NIAH or as a Protected Structure but is considered to be of significant architectural merit by reason of its architectural and local historic interest.



**Photograph 11** Grange House located to the southwest of the Proposed Development.

## Previous Archaeological Work

Examination of the online excavations.ie Database of Irish Excavation Reports indicated a series of previous archaeological investigations within the study area. No archaeological work has taken place within the Proposed Development area.

# Archaeology and Cultural Heritage

## Desk-based Report

### **Metro West light railway Compounds 2A, 2B and 2M (2007)**

The closest investigation was related to the development of the Metro West light railway. In 2007, archaeological testing was carried out along section 2 of the scheme under licence 07E0749 (Moriarty, 2007). Compounds 2A and 2B were investigated in Cappagh with evidence of agricultural activity including a field boundary. Compound 2M in Kishoge 126m to the northeast of the Proposed Development revealed modern field drains and backfill.

### **Grange Park Castle International Business Park**

The remaining archaeological investigations are all located to the south of the Proposed Development and are associated with the Grange Park Castle International Business Park and associated infrastructure.

The closest of these previous investigations to the Proposed Development took place in 2015 within an area 298m to the southwest. This investigation uncovered evidence of modern disturbance and agricultural activity (O'Connell, 2015). Further investigation was conducted in 2015 within an area 400m to the southwest. Nothing of archaeological significance was uncovered (Shine, 2015).

In 2001 archaeological monitoring of groundworks within an area 338m to the south uncovered the remains of a truncated burnt Neolithic wooden house. This house was excavated under licence 01E0061 (O'Donovan, 2001). Ploughing had led to the truncation of the structure, and no occupation surfaces survived. However, cut features, such as post-holes, pits and foundation trenches, were identified at the site.

The structure measured 6.05m (north-east/south-west) by 4.5m. The house walls and the support for the building's superstructure were constructed from oak timber posts augmented by oak planking. All of the posts and planks identified in the house were of oak. The foundation trenches varied between 0.25m and 0.3m in width and 0.08–0.21m deep. Results of radiocarbon dating indicate that the house was built and occupied between *cal BC* 3941 and 3659. A Middle Bronze Age date was also obtained from a large pit to

the south of the house (*cal BC* 1595–1131), suggesting later prehistoric activity.

Testing was carried out in 2016 under licence 13E0459 on an area 745m to the southwest of the Proposed Development. Seven pits filled with charcoal rich soils were uncovered and excavated. Further archaeological monitoring under this licence 913m to the southwest did not uncover anything of archaeological significance.

An area 965m to the southwest of the Proposed Development has been subject to three previous archaeological investigations.

- The earliest of these took place in 2000 under licence 00E0754 in relation to archaeological monitoring of groundworks associated with the business park (Doyle, 2000). A complex of intercutting medieval ditches and gullies were uncovered with 1500 sherds of locally manufactured pottery and a complete iron sickle recovered. Further archaeological investigation in 2003 under licence 03E1846 did not uncover anything of archaeological significance (Tobin, 2003).
- Investigations the following year under licence 04E0299 uncovered two burnt mounds which were associated with the former line of the River Giffen. No evidence for troughs were uncovered at either burnt mound, although a row of stake holes was noted adjacent to one of the mounds. The purpose of these stake holes was not determined and the excavator thought they may not be part of the same structure (Tobin, 2004).

The final archaeological investigation took place in 2013 at a location 912m to the south of the Proposed Development. Archaeological monitoring of groundworks associated with infrastructure associated with the business park was carried out under licence 13E0435 (McLoughlin, 2013). A small bowl furnace and a shallow oval charcoal clamp were uncovered. Radio carbon dating revealed that the furnace dated to the early Iron Age while the charcoal clamp dated to the early medieval period.

Archaeological investigations were proposed in order to inform this report. These investigations were to take the

# Archaeology and Cultural Heritage

## Desk-based Report

form of 10 no. test trenches each measuring 30m long by 2m wide positioned within the flat terrain of the field surrounding the Kishogue Park traveller halting site. The proposed layout of these trenches can be seen in Figure 3. Several attempts were made to undertake these archaeological investigations, but each attempt was curtailed by opposition from the local inhabitants.

## Geotechnical Ground

### Investigations

Geotechnical ground investigations were carried out to inform on the underlying ground conditions. These ground investigations comprised a programme of exploratory works with those pertinent to this report being 56 no. percussive boreholes and 3 no. mechanically excavated trial pits (IGSL Limited, 2022). These investigations were completed across the Proposed Development.

Sod was recorded as approximately 0.2m thick across the Proposed Development while topsoil consisted of soft to firm grey, brown / dark grey sandy gravelly clay. This topsoil varied in depth between 0.2m thick at west to 1.1m thick in places within the eastern half of the Proposed Development. Topsoil overlay glacial till comprising grey, brown / black sandy clay which is locally referred to as 'Dublin Boulder Clay'.

The site visit noted disturbed ground within the western half of the Proposed Development, and this was corroborated by the geotechnical ground investigations with made ground comprising firm light brown sandy gravelly clay containing glass, brick and MDF encountered within 20 of the percussive boreholes and 2 no. of the mechanically excavated trial pits. This included within the percussive boreholes to the immediate north and east of the traveller halting site.

The made ground overlay glacial till in all but 4 of the percussive boreholes suggesting the previous ground disturbance had removed the topsoil within these areas. Topsoil was still evident under the made ground in TP19 on the western edge of the Proposed Development and in TP30, TP33 and TP59 to the immediate north of Lynch's Lane.

The field separating the disturbed area to the west and the traveller halting site at east contained topsoil up to 1.1m thick in places. This suggests that the field has been relatively undisturbed by agricultural or other activity.

## Cartographic Analysis

The Down Survey map (1656) shows the layout of the area during the mid-17th century (**Plate 1**). Kishoge is marked but few details are apparent, and the Proposed Development cannot be discerned. The tower house at Grange (DU017-034) is the only archaeological feature marked.



**Plate 1** Down Survey Map 1656 – Extract from the Barony of Newcastle and Upper Crosse (After Clonburris SDZ Draft Planning Scheme September 2017)

Rocque's map of 1760 shows the layout of the area approximately a century after the Down Survey map (**Plate 2**). Rocque's map shows the area in greater detail with field systems and local roads marked. Kishoge is marked to the northeast of the location of the Proposed Development which is shown as fields. The area appears rural, although the Grand Canal is a major feature cutting across the landscape. No previously unrecorded archaeological features are shown within the fields, although Grange Castle (DU017-034) is clearly marked.

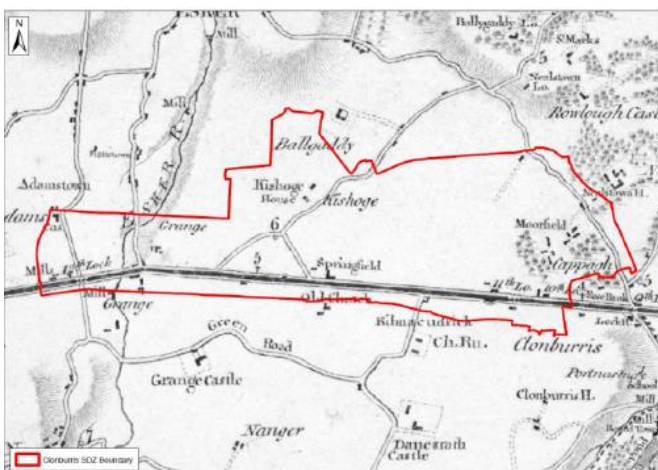
# Archaeology and Cultural Heritage

## Desk-based Report



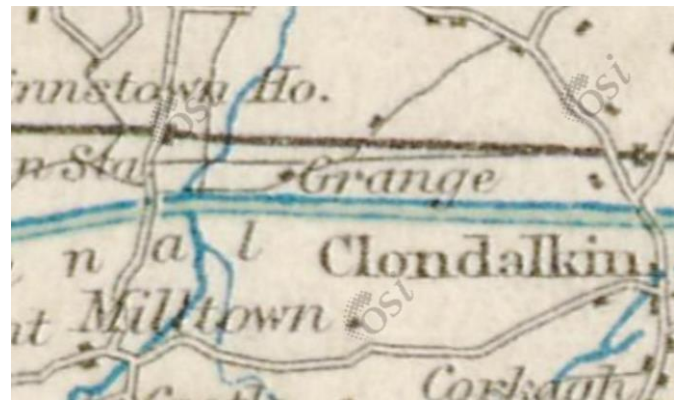
**Plate 2** 1760 Rocque's Map of Environs of Clonburris with Approximate SDZ Boundary (After Clonburris SDZ Draft Planning Scheme September 2017)

Taylor's Map of Environs of Clonburris was drawn in 1815 and shows the layout at the start of the 19th century (**Plate 3**). This map sheet is less detailed than Rocque's map and few details can be discerned regarding the location of the Proposed Development. Kishoge and Kishoge House are marked to the northeast though the location of the Proposed Development is featureless. The Grand Canal is a major feature in the landscape and Taylor has marked features such as the locks and adjacent mill buildings.



**Plate 3** Taylor's Map of Environs of Clonburris (1815) with Approximate SDZ Boundary (After Clonburris SDZ Draft Planning Scheme September 2017)

Another major change to the landscape came with the construction of the railway during the late 19th century. The scale of this map precludes much detail being shown (**Plate 4**). The area still appears rural with some settlement in the form of scattered dwellings marked. A building labelled Grange is shown adjacent to a road. This building is likely Grange House which has been identified as an additional heritage feature. The canal is also a major feature but none of the associated locks or lock houses are shown. Neither are the tower houses or mill buildings shown.



**Plate 4** Taylor's Map of Environs of Clonburris (1815) with Approximate SDZ Boundary (After Clonburris SDZ Draft Planning Scheme September 2017)

## Assessment of the Baseline

No archaeological investigations have been carried out within the Proposed Development area. Previous investigations in the surrounding study area have identified evidence of prehistoric activity including a burnt Neolithic house, a Bronze Age ring barrow and burnt mounds, an early Iron Age furnace, and an early medieval charcoal clamp, as well as undated pits and field boundaries. Medieval activity is associated with Grange Castle tower house and farmhouse, St. Cuthbert's church and graveyard and a moated site, and field boundaries, ditches and gullies. The potential for later prehistoric, early medieval, medieval and later remains within the boundaries of the Proposed Development areas is considered to be **moderate to high**.

# Archaeology and Cultural Heritage

## Desk-based Report

A site visit has been carried out, although this was restricted to the western part of the Proposed Development. This area is overgrown with numerous mounds of imported material present while the ground surface is uneven and may have been previously disturbed. No archaeological testing was proposed for this area due to the physical constraints. A cursory inspection of the eastern part of the Proposed Development suggested that it comprised level greenfield land which does not exhibit any obvious signs of previous disturbance. However, geotechnical works have highlighted that the areas within the western part of the Proposed Development and to the north and east of the traveller halting site have been disturbed with topsoil removed. The potential within these areas for encountering intact subsurface archaeological horizons is considered **low**.

Although some areas of ground disturbance are present, geotechnical works have shown that undisturbed ground and fill overlying topsoil are present within parts of the Proposed Development. This combined with analysis of aerial imagery and historic mapping suggests that the potential for encountering intact subsurface archaeological horizons is **high** in these areas.

No waterlogged remains have been recorded in or near the Site. The potential for palaeoenvironmental remains at the Site is therefore considered to be **low to moderate**.

## Conclusions

This desk-based assessment has set out the baseline for the Proposed Development, with a 1km study area for all archaeological assets. A discretionary consideration of assets within a broader 1km buffer area has been undertaken for assets of particular historic interest, or those which may contribute specifically to an understanding of the historic and archaeological environment of the Proposed Development.

The assessment has concluded that there is a potential for unknown archaeological assets within the Site.

## Recommendations

This desk-based assessment has predicted **moderate to high** potential for the presence of archaeological remains of the later prehistoric, early medieval, medieval and later periods to survive within the areas of the Proposed Development where topsoil has not been removed. There is the potential that unexpected archaeological remains of all periods may be discovered within the Proposed Development.

Previous land use may severely inhibit the efficacy of geophysical survey equipment and the usefulness of data produced. It is therefore expected that a geophysical survey would not be required.

Further consultation with the SDCC Heritage Officer is recommended to determine a staged programme of test trenching, excavation works and/or archaeological monitoring of groundworks in order to record:

- archaeologically significant remains associated with known later prehistoric, early medieval, medieval and later remains in the study area;
- previously unknown archaeological remains identified during geotechnical works or evaluation trial trenching.

It is anticipated that the SDCC Heritage Officer and the National Monuments Service (NMS) will require that a programme of archaeological test trench evaluation be undertaken following vegetation clearance and well in advance of the main construction works as soon as the Proposed Development area is available, to assess the potential presence for below-ground archaeological remains within the Proposed Development area. Early consultation should be undertaken in order to determine the requirement for archaeological evaluation.

Following interpretation of the results of test trench evaluation, further consultation with the SDCC Heritage Officer and the NMS should be undertaken to determine any requirement for further archaeological mitigation, such as a detailed, targeted strip and map (excavation) or watching brief(s) on intrusive groundworks.

Any archaeological evaluation and mitigation works should be undertaken by a suitably qualified

# Archaeology and Cultural Heritage

## Desk-based Report

archaeologist working under licence in accordance with an archaeological Programme of Works that sets out the scope of work and is approved in advance by the SDCC Heritage Officer and the NMS.

## References

Legislation and planning guidance

National Monuments Act 1930. Available online at:  
<http://www.irishstatutebook.ie/eli/1930/act/2/enacted/en/print>

National Monuments (Amendment) Act 1954. Available online at:  
<http://www.irishstatutebook.ie/eli/1954/act/37/enacted/en/print.html>

National Monuments (Amendment) Act 1987. Available online at:  
<http://www.irishstatutebook.ie/eli/1987/act/17/enacted/en/print.html>

National Monuments (Amendment) Act 1994. Available online at:  
<http://www.irishstatutebook.ie/eli/1994/act/17/enacted/en/print.html>

National Monuments (Amendment) Act 2004. Available online at:  
<http://www.irishstatutebook.ie/eli/2004/act/22/enacted/en/print.html>

Heritage Act 1995 Available online at:  
<http://www.irishstatutebook.ie/eli/1995/act/4/enacted/en/print.html>

Heritage Act 2018 Available online at:  
<http://www.irishstatutebook.ie/eli/2018/act/15/enacted/en/html>

Architectural Heritage (National Inventory) and Historic Monuments (Miscellaneous Provisions) Act 1999 Available online at:  
<http://www.irishstatutebook.ie/eli/1999/act/19/enacted/en/print.html>

Environment Act 2011. Available online at:  
<http://www.irishstatutebook.ie/eli/2011/act/20/enacted/en/print.html>

Local Government (Planning and Development) Acts, 1963 to 1999. Available online at:  
<http://www.irishstatutebook.ie/eli/1963/act/28/enacted/en/print.html>;

<http://www.irishstatutebook.ie/eli/1976/act/20/enacted/en/print.html>;

<http://www.irishstatutebook.ie/eli/1982/act/21/enacted/en/print.html>;

<http://www.irishstatutebook.ie/eli/1983/act/28/enacted/en/print.html>;

<http://www.irishstatutebook.ie/eli/1990/act/11/enacted/en/print.html>;

<http://www.irishstatutebook.ie/eli/1992/act/14/enacted/en/print.html>;

<http://www.irishstatutebook.ie/eli/1993/act/12/enacted/en/print.html>;

<http://www.irishstatutebook.ie/eli/1998/act/9/enacted/en/print.html>;

<http://www.irishstatutebook.ie/eli/1999/act/17/enacted/en/print.html>

Local Government (Planning and Development) Regulations, 1994. Available online at:  
<http://www.irishstatutebook.ie/eli/1994/act/8/enacted/en/print.html>

Local Government (Planning and Development) Act, 2000. Available online at:  
<http://www.irishstatutebook.ie/eli/2000/act/25/enacted/en/print.html>

Local Government (Planning and Development) (Amendment) Act 2002. Available online at:  
<http://www.irishstatutebook.ie/eli/2002/act/32/enacted/en/print.html>

Planning and Development Regulations 2001. Available online at:  
<http://www.irishstatutebook.ie/eli/2001/si/600/made/en/print#part6>

Cork County Council, 2006, Guidance Notes for the Appraisal of Historic Gardens, Demesnes, Estates and their Settings. Available online at:  
<https://www.corkcoco.ie/sites/cork-cms/files/2017-04/Guidance%20Notes%20for%20Appraisal.pdf>.

Department of Arts, Heritage, Gaeltacht and the Islands. 1999a Framework and Principles for the Protection of the Archaeological Heritage. Dublin. Government Publications Office. Available online at:  
<https://www.archaeology.ie/sites/default/files/media/publications/framework-and-principles-for-protection-of-archaeological-heritage.pdf>.

# Archaeology and Cultural Heritage

## Desk-based Report

Department of Arts, Heritage, Gaeltacht and the Islands. 1999b Policy and Guidelines on Archaeological Excavation. Dublin. Government Publications Office. Available online at: <https://www.archaeology.ie/sites/default/files/media/publications/excavation-policy-and-guidelines.pdf>.

Department of Arts, Heritage and the Gaeltacht (2004/2011), Architectural Heritage Protection Guidelines for Planning Authorities. Available online at: [http://www.buildingsofireland.ie/FindOutMore/Architectural%20Heritage%20Protection%20-%20Guidelines%20for%20Planning%20Authorities%20\(2011\).pdf](http://www.buildingsofireland.ie/FindOutMore/Architectural%20Heritage%20Protection%20-%20Guidelines%20for%20Planning%20Authorities%20(2011).pdf)

Environmental Protection Agency (2015), Draft Advice Notes for preparing Environmental Impact Statements. Dublin. Government Publications Office. Available online at: <https://www.epa.ie/pubs/consultation/reviewofdraftguidelinesadvicenotes/>

Environmental Protection Agency (EPA), 2017, Draft Guidelines on the Information to be Contained in Environmental Impact Assessment Reports. Available online at: <https://www.epa.ie/pubs/advice/ea/drafteiarguidelines.html>

Heritage Council, 2000, Archaeology & Development: Guidelines for Good Practice for Developers. The Heritage Council, Dublin.

Historic England. (2017), Historic Environment Good Practice Advice in Planning: Note 3 (Second Edition) – The Setting of Heritage Assets. Historic England, Swindon. Available online at: <https://historicengland.org.uk/images-books/publications/gpa3-setting-of-heritage-assets/>

South Dublin County Development Plan 2016 – 2022. Available online at: <https://www.sdcc.ie/en/services/planning/development-plan/plan-2016-2022/>

South Dublin County Development Plan 2016 – 2022: Record of Protected Structures. Available online at: <http://www.dublincity.ie/main-menu-services-planning-heritage-and-conservation-conservation/protected-structures>

### Secondary sources

Aalen, F.H.A. and Whelan, K. (Eds.), 1992, Dublin City and County: From Prehistory to Present. Geography Publications, Dublin.

Ball, F Elrington (1902-20), A history of the county of Dublin: the people, parishes and antiquities from the earliest times to the close of the eighteenth century. Dublin: Alexander Thom.

Clonburris Strategic Development Zone (SDZ) Draft Planning Scheme Archaeological and Architectural Heritage Inventory September 2017.

D'Alton, J. 1838, The History of the County of Dublin. Hodge and Smith, Dublin.

Doyle, I (2001), Grange Castle International Business Park, Grange and Kishoge, Dublin in excavations.ie Database of Irish Excavation Reports

Doyle, I (2001), Grange Castle International Business Park, Grange/Nangor/Kilmahuddrick, Dublin in excavations.ie Database of Irish Excavation Reports

Doyle, I (2002), Grange Castle International Business Park, Grange and Kishoge, Dublin (licence extension) in excavations.ie Database of Irish Excavation Reports

Duffy, P (2016), Grange Castle, Dublin in excavations.ie Database of Irish Excavation Reports

IGSL Limited Clonburris SDZ Phase 1 Additional Ground Investigation (AGI) Ground Investigation Report April 2022.

McLoughlin, G (2013) Grange/Ballybane/Nangor, Co. Dublin in excavations.ie Database of Irish Excavation Reports.

Moriarty, C (2007), Kildare Rail Route Project, Section 2, Cappagh to Stacumny Cottage, Dublin in excavations.ie Database of Irish Excavation Reports.

Murphy, M. & Potterton, M. 2010, The Dublin Region in the Middle Ages. Four Courts Press, Dublin

National Inventory of Architectural Heritage Buildings Survey and Garden Survey. Available online at: [www.buildingsofireland.ie/Surveys/](http://www.buildingsofireland.ie/Surveys/)

# Archaeology and Cultural Heritage

## Desk-based Report

O'Brien, R (1998), Grange Castle Business Park, Kilmahuddrick Clondarkin, Dublin in excavations.ie Database of Irish Excavation Reports

O'Connell, A (2015), Grange Castle Access Road, Grange Castle, Dublin in excavations.ie Database of Irish Excavation Reports

O'Donovan, E (2001), Kishoge, Dublin in excavations.ie Database of Irish Excavation Reports

Shine, D (2015), Grange Castle Business Park, Clondarkin, Dublin in excavations.ie Database of Irish Excavation Reports

South Dublin County Council (2018), Clonburris SDZ Planning Scheme Strategic Environmental Assessment Final Environmental Report.

South Dublin County Council (2017), Clonburris SDZ Draft Planning Scheme Character Areas and Development Areas document.

Tobin, R (2003), Grange International Business Park, Grange, Dublin in excavations.ie Database of Irish Excavation Reports.

Walsh, F (2016), Grifols Phase 2 site #B201, Grange Castle Business Park, Grange Dublin in excavations.ie Database of Irish Excavation Reports.

### Online Sources

Archaeological Survey of Ireland at <http://webgis.archaeology.ie/NationalMonuments/FlexViewer/>

The Down Survey of Ireland at <http://downsurvey.tcd.ie/>

National Inventory of Architectural Heritage at <http://buildingsofireland.ie/>

Ordnance Survey Ireland at <http://www.osi.ie/>

Placenames Database of Ireland at <http://www.logainm.ie/en/>

Townlands of Ireland at <http://www.townlands.ie/>

Geological Survey of Ireland at <http://gsi.ie/>

Griffith's Valuation at <http://www.askaboutireland.ie/griffith-valuation/>

Transcripts of Annals of Dublin from Thom's Directories at [www.swilson.info/annalsdublin.php](http://www.swilson.info/annalsdublin.php)

Heritage Council, Heritage Maps viewer site, County Dublin Archaeology Data Viewer at <https://w12-iis.compass.ie/heritagelandingpage/WebApps/DublinArchaeologyProject/index.html>

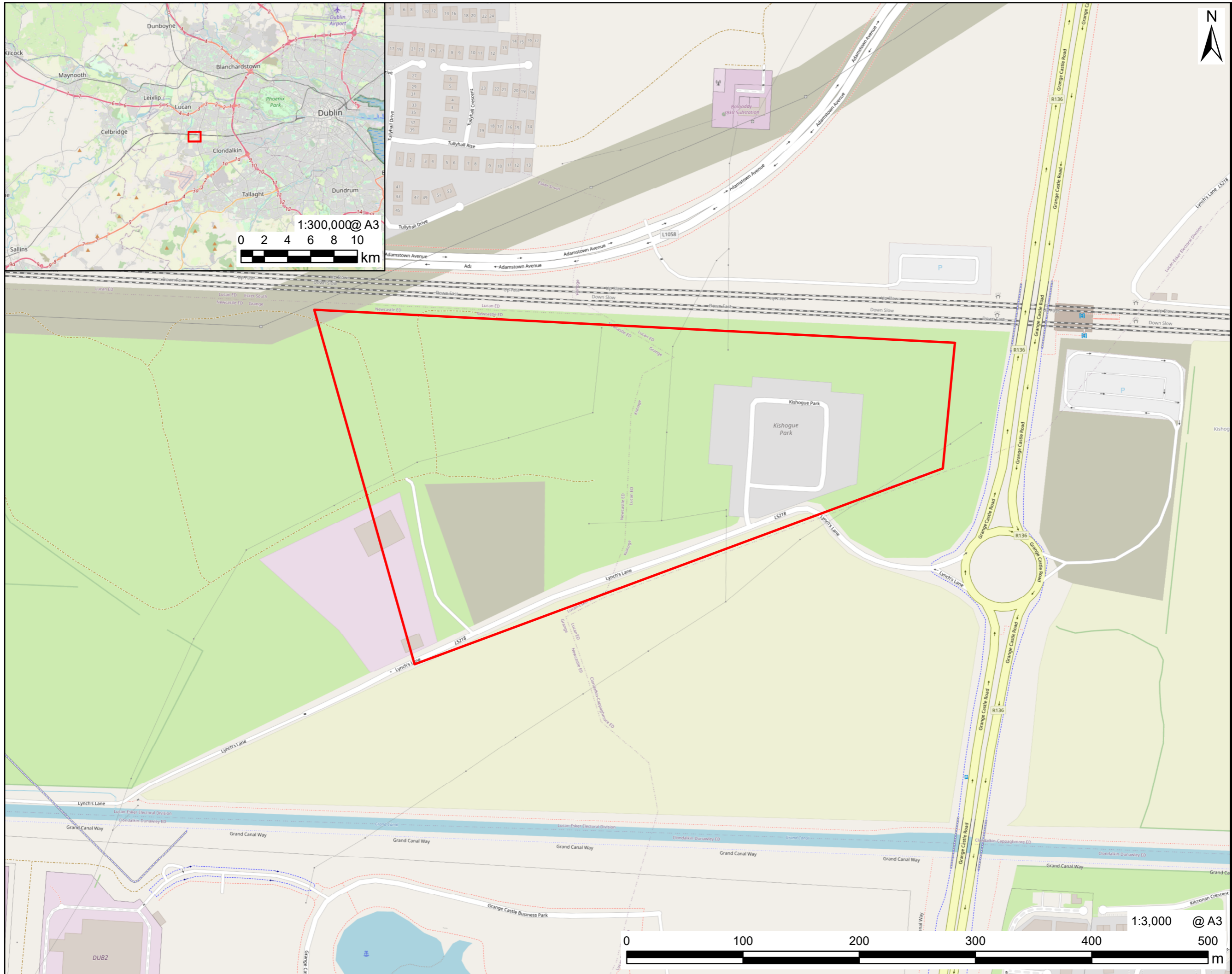
Database of Irish Excavation Reports at [www.excavations.ie](http://www.excavations.ie)

## Figures

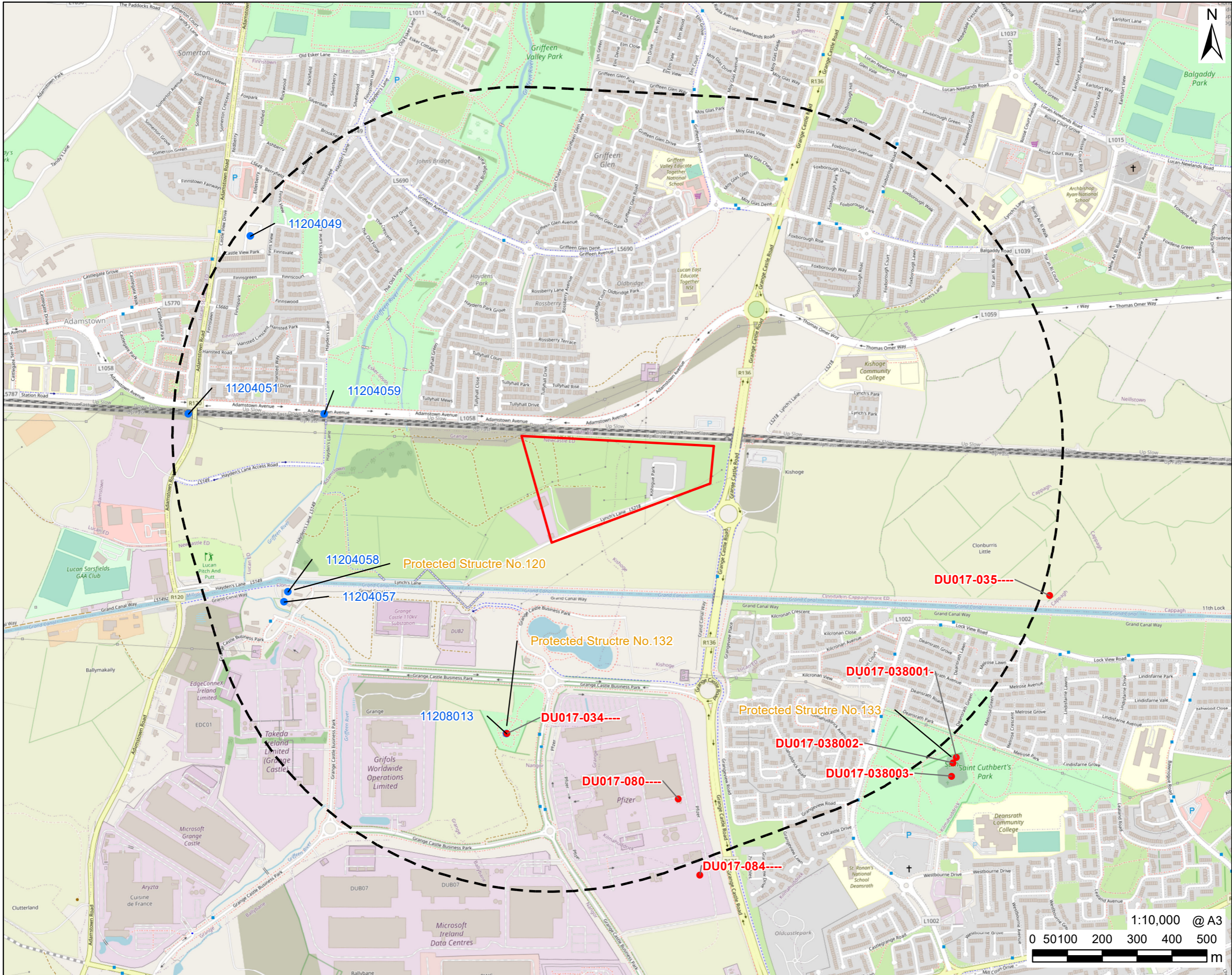
Figure 1 Site Location

Figure 2 Heritage Assets within, or just outside, 1km of the Site

Figure 3 Archaeological Test Trenching Regime



This drawing has been prepared for the use of AECOM's client. It may not be used, modified, reproduced or relied upon by third parties, except as agreed by AECOM or as required by law. AECOM accepts no responsibility, and disclaims any liability whatsoever, to any party that uses or relies on this drawing without AECOM's express written consent. Do not scale this document. All measurements must be obtained from the stated dimensions.





**LEGEND**

- Site Boundary
- Test Trench
- Area to be Archaeologically Tested Pre-Cleared of Obstructions and Available

**NOTES**  
© OpenStreetMap (and contributors, CC-BY-SA)

**ISSUE PURPOSE**  
DRAFT  
**PROJECT NUMBER**  
60850394  
**SHEET TITLE**  
Archaeological Test Trenching Regime

**SHEET NUMBER**  
Figure 3

This drawing has been prepared for the use of AECOM's client. It may not be used, modified, reproduced or relied upon by third parties, except as agreed by AECOM or as required by law. AECOM accepts no responsibility and disclaims any liability whatsoever, to any party that uses or relies on this drawing without AECOM's express written consent. Do not scale this document. All measurements must be obtained from the stated dimensions.

# Archaeology and Cultural Heritage

## Desk-based Report

### Appendices

#### Gazetteer 1 – Recorded Monuments within the study area

SMRS	RPS Ref	Type	Period	Description	Condition
DU017-034	132	Tower House	Early medieval / post medieval	Attached to a farmhouse in flat, low-lying ground. Shown as a castle on the Down Survey (1655-6) map. This is a rectangular tower house with a square tower that projects to the N in the NE corner. The tower house is three storeys high. In 1997 monitoring and excavation were undertaken in the vicinity of the castle, in advance of the construction of an access road and the excavation of foul sewers for a Business Park at Grange Castle. The evidence suggests that extensive early medieval and post-medieval activity survives in this area; the ditches can be interpreted as medieval field boundaries (O'Brien, R. 1998, 26-7).	Substantial remains
DU017-035		Enclosure	Unknown	In field of rough pasture bordering the canal. An aerial photograph (FSI 1971/224-6) shows a horseshoe-shaped enclosure. Not visible at ground level.	No upstanding remains
DU017-038001	133	Church	Medieval	Situated in the NE corner of a rectangular disused graveyard close to Deansrath Estate. This is a medieval parish church which served the smallest parish in the County. It is dedicated to St. Cuthbert of Lindisfarne and was held by St. Mary's Abbey, Dublin from 1186 until 1540 when it was re-united with Clondalkin (Ball 1940, 182-183). Comprises a nave and chancel divided by a two-centred chancel arch. Built of undressed random rubble masonry. To the S of the graveyard is a possible moated site (DU017- 038001-; see Ní Mharcaigh 1977, 270-271).	Some remains
DU017-038002	133	Graveyard	Medieval	Located in a flat, low-lying area. This is a rectangular disused graveyard close to Deansrath Estate. Remains of a medieval parish church (DU017-038001-) stand in the NE corner of the graveyard. Very few gravestones remain visible. It contains some 19th century memorials. Attached to the S side of the graveyard is a possible moated site (DU017-038003-).	Some remains
DU017-038003	133	Moated Site	Medieval	Located in flat, low-lying land attached to the S side of Kilmahuddrick graveyard (DU017- 038002-). A roughly rectangular enclosure) which is defined by a flat-topped earthen bank and wide outer fosse. There is a causeway across the fosse in the NE and a corresponding break in the enclosing bank.	Some remains

# Archaeology and Cultural Heritage

## Desk-based Report

DU017-80		Ring Barrow	Prehistoric	Geo-physical survey and test trenching in 2000 revealed a ring barrow. This was located in a slightly elevated position. It comprises a ditch (Wth 2.5m, D 1.6m) which encloses a maximum area of 13m. Fragments of a human skull was found in the upper fill of the ditch. A 'cist-like structure' was exposed in the northern quadrant of the ditch. Cremated bone associated with Early Bronze Age pottery and a bead were found within the interior of the enclosing ditch. Soil samples from the ditch contained remains of barley, wheat, oats and evidence for hazel, haw and sloe (Doyle 2002, 75-6).	Excavated
DU017-084		Fulacht Fiadh	Prehistoric	Monitoring of topsoil-stripping in 2000 revealed the remains of a small fulacht fiadh. This consisted of a small pit or trough, a spread of heat-cracked stone and a linear feature to the south-west of the trough. The pit/trough consisted of a subcircular cut into natural, 0.56m by 1.25m. This spread measured 1.92m north-south x 1.18m with a maximum depth of 0.05m. Approximately 6m to the west of the spread a linear gully feature was revealed. This gully consisted of a cut into natural boulder clay measuring 2.57m north-south x 0.28-0.54m. This had a depth of 0.16m with sharply sloping sides and a flat base. The cut was filled with a moderately compact, mid-brown clay containing frequent pieces of oxidised clay and occasional flecks of charcoal. Infrequent fragments of burnt bone were noted in the fill (Doyle, 2001)	Excavated

## Gazetteer 2 – NIAH and Protected Structures

NIAH Ref	RPS Ref	Name	Type	Street/Town	Description
11204048		Cool amber House,	House	R120, Finnstown, Dublin	Detached six-bay two-storey house, c.1945. Angled wing to east. Roughcast rendered walls with smooth rendered base course. uPVC casement windows with smooth rendered surrounds and decorative keystones. Three-sided porch, with timber panelled door having fanlight and segmental-arched timber doorcase. Pitched slate roof with smooth rendered chimney stacks.

# Archaeology and Cultural Heritage

## Desk-based Report

11204051		N/A	Road bridge	R120, Adamstown, South County Dublin	Single-arch road bridge over railway, c.1915. Three-centred arch with dressed voussoir stones. Coursed limestone parapets with granite coping at road level. Coursed limestone retaining walls either side of bridge.
11204057	120	Grange Cottage	Farm House	Grange, South County Dublin	Detached six-bay single-storey farm house, c.1810. Roughcast rendered walls with smooth rendered base course. Timber sash windows. Two projecting canted bays with hipped roofs to the front elevation flanking an enclosed glazed porch with a lean-to roof of corrugated iron. Pitched slate roof with four brick chimney stacks. Corrugated iron shed with a lean-to roof and another small modern flat-roofed extension attached to rear.
11204058		N/A	Farm Buildings	Grange, South County Dublin	Detached multiple-bay single-storey farm buildings set around a courtyard, c.1820, now in a dilapidated site. Random coursed stone rubble construction with large corrugated iron doors. Pitched roof of corrugated iron and slate. Breeze-block wall to south.
11204059		N/A	Road Bridge	Hayden's Lane, South County Dublin	Single-arch road bridge over railway, c.1915. Three-centred arch with dressed voussoir stones. Coursed limestone parapets with granite coping at road level. Coursed limestone retaining walls either side of bridge. Long embankments to each approach to bridge with walls of limestone rubble having vertically set stone coping.
11208013		Grange Castle	Castle / Fortified House	Milltown, Grange, South Dublin County	Ruinous remains of detached multiple-bay three-storey over vaulted basement former tower house, remodelled c. 1750 by addition of two-bay two-storey domestic wing attached to the west, with large supporting wall buttresses to the south. All openings blocked in roughcast walls leading to partially roofless wallheads. Earlier house, built c.1580, retains slender projecting square tower and garderobe. Large chimneybreast exposed where buildings have been demolished in the east.